

# Gazelle Accelerator

Matching manufacturing challenges with innovative solutions.



**gazelle  
accelerator**



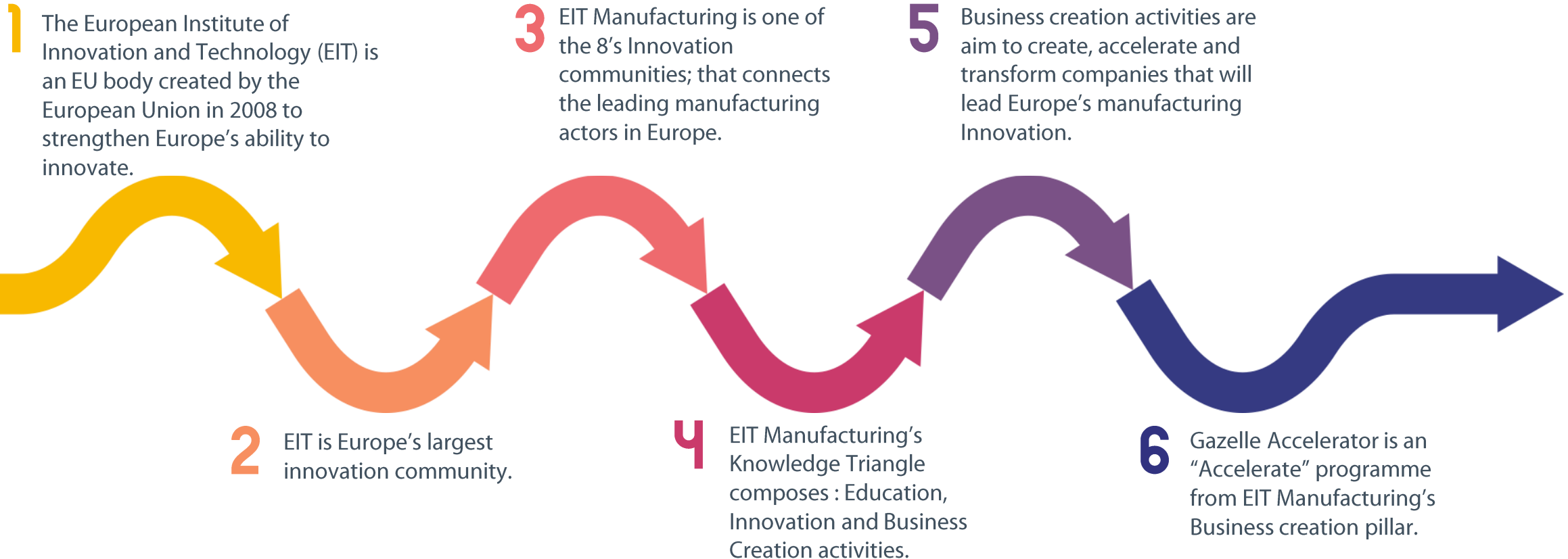
**eit** Manufacturing



Co-funded by the  
European Union

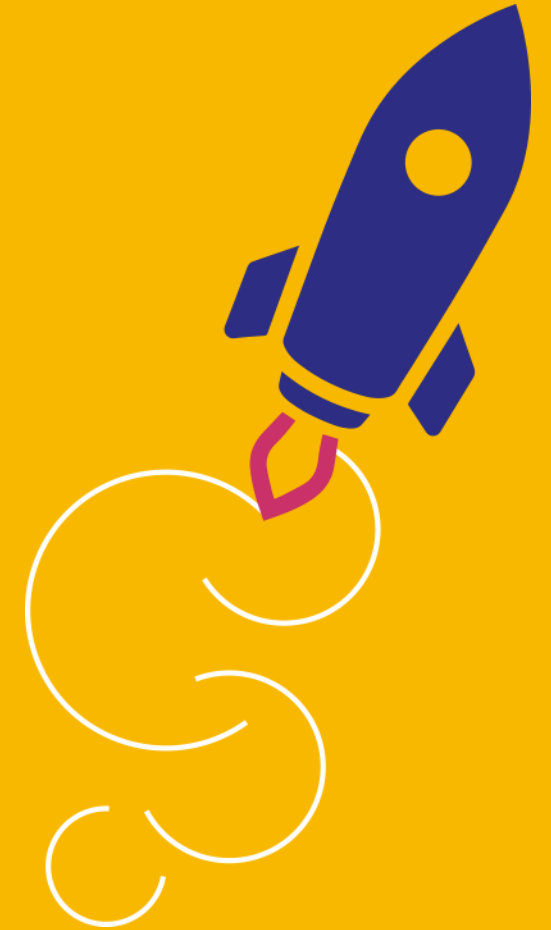
## A short history of Gazelle Accelerator

### Who we are



Let's transform Europe!  
**Our mission**

Gazelle Accelerator aims at supporting start-ups and SMEs to accelerate their growth through dedicated training & coaching sessions, through connections with end-users and investors to stay ahead on their competitive advantage.



# Gazelle Accelerator is...

---



## Scouting

European high tech and high potential start-ups and SMEs



## Enabling

business transformation to the age of digital disruption



## Finding

potential partners for innovation projects or other future collaborations



## Identifying

most innovation industry 4.0 solutions for manufacturing



## Opening

opportunities to collaborate with cutting-edge companies



## Contributing

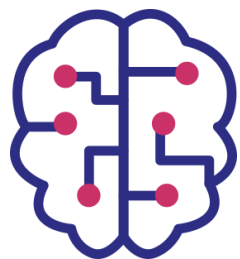
to European economic growth and job creation

...matching manufacturing challenges with your innovative solutions



Co-funded by the European Union

European manufacturing accelerator  
**Gazelle Accelerator in a nutshell**



75

SMEs and start-ups integrated into the program since its beginning in 2020

14

Countries covered in Europe (Central/East Europe + France)

5

technology areas covered from industry 4.0

7

use cases identified with industrial corporates

80

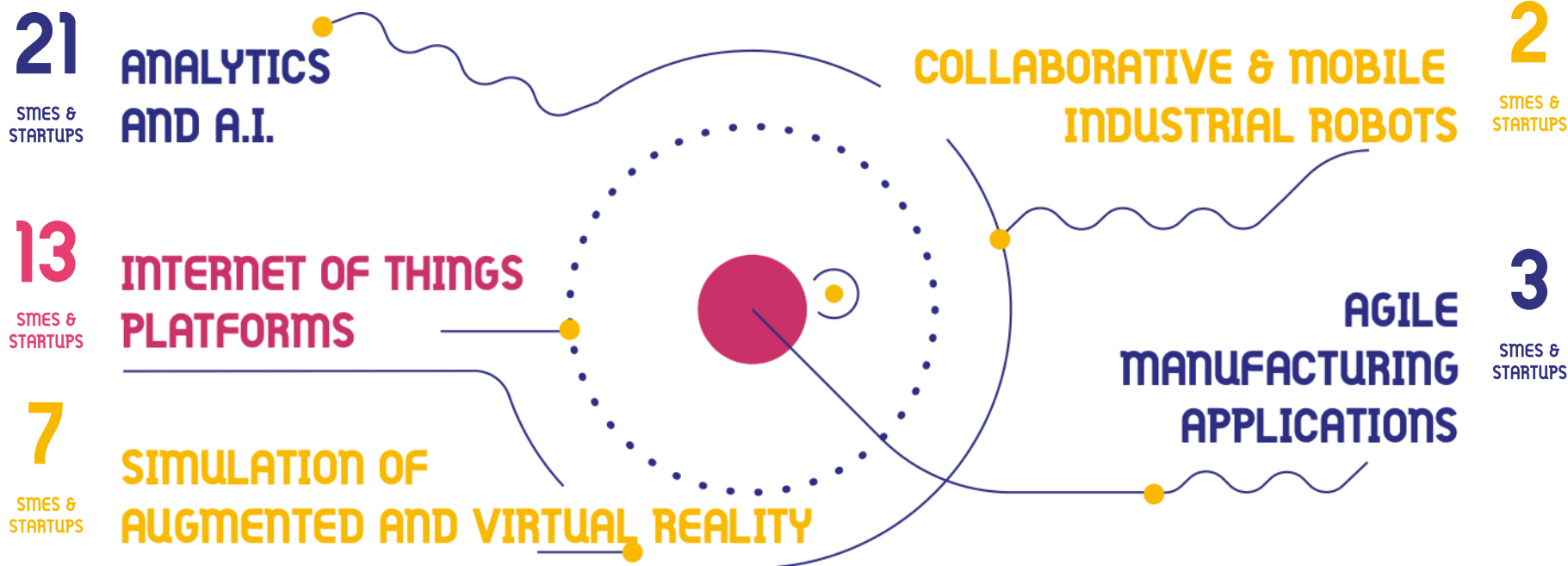
Connections made between startups and corporates and/or investors

# Domain of expertises

of the SMEs and start-ups integrating the portfolio since 2020



## Technology areas covered so far



## Potential to expand on

Additive manufacturing  
Sustainable manufacturing technologies  
Cyber-security technologies

RFID and location technologies  
Perception technologies  
Among others...

# Gazelle Accelerator Team

Partners leading the programme



**Aerospace Valley**  
France



**RoboValley**  
The Netherlands



**LINPRA**  
Lithuania



**LMS**  
*Laboratory for  
Manufacturing Systems  
& Automation*

**LMS**  
Greece



**TU Delft**  
The Netherlands

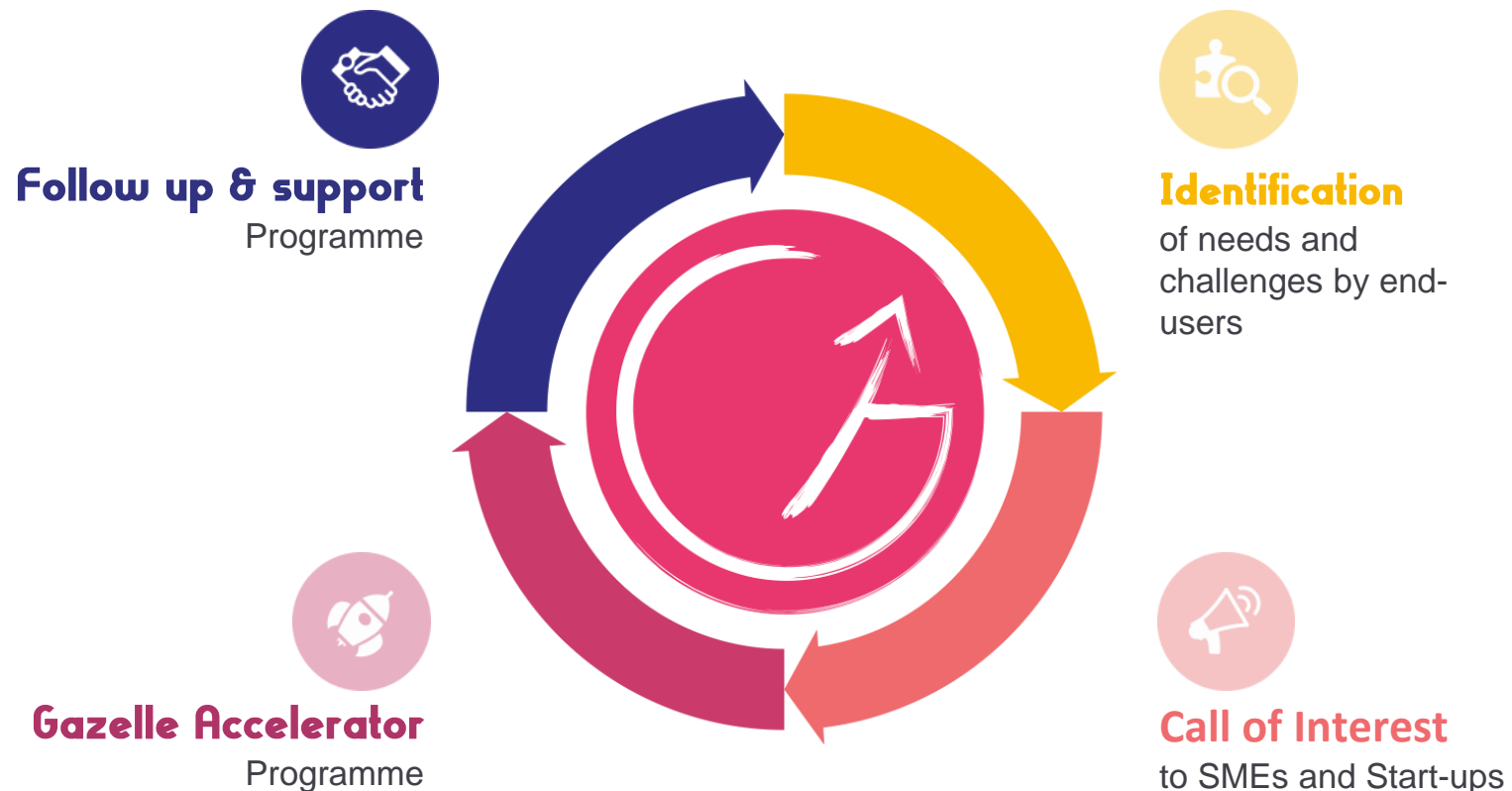


**KTU**  
Lithuania



# Gazelle Accelerator

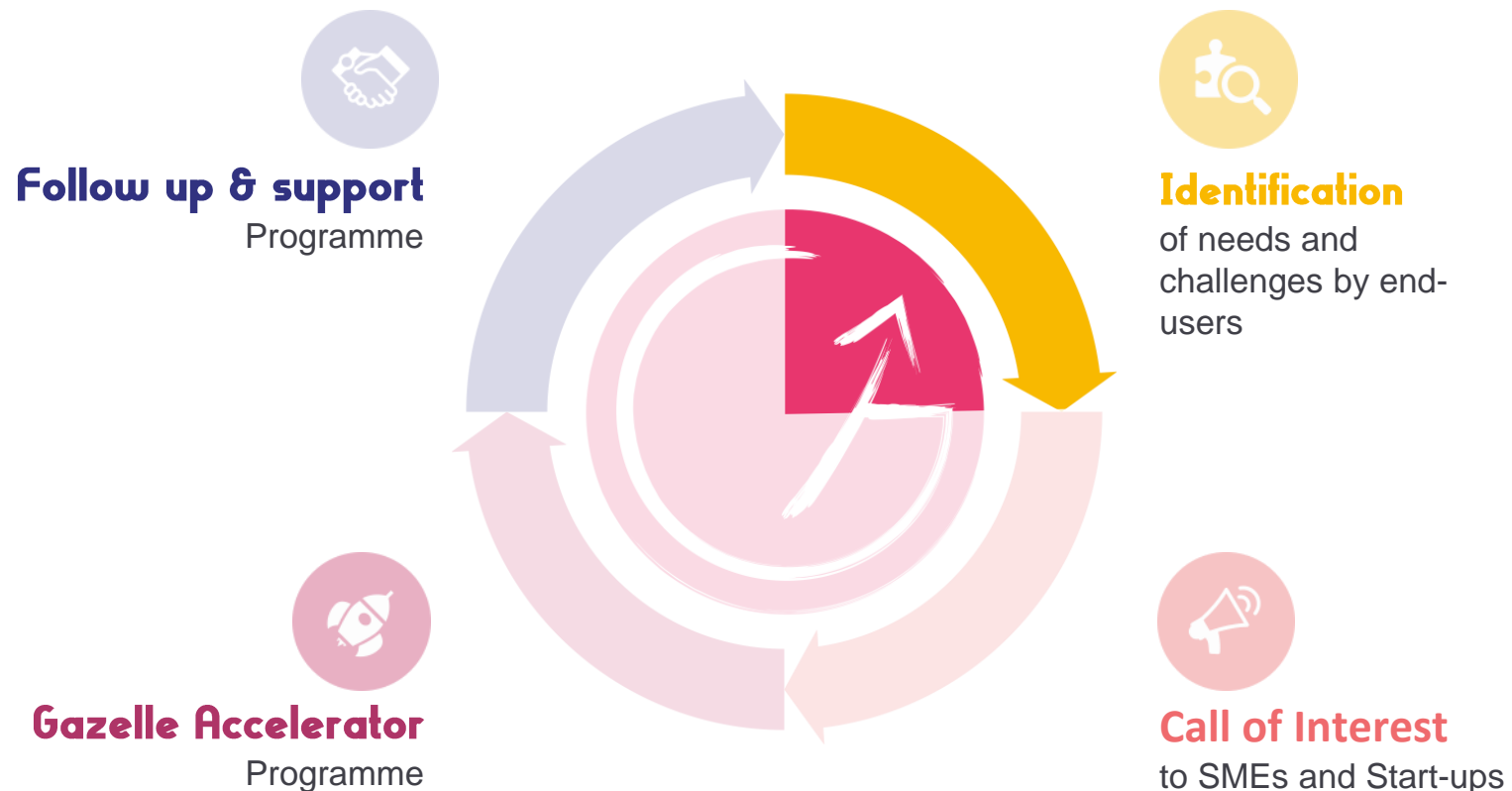
A yearly Programme





# Gazelle Accelerator

A yearly Programme



**COMPANY NAME:** NMS**COMPANY WEBSITE:** <http://www.nms-int.com/>**TITLE OF THE CHALLENGE:** Sensors and software for image processing for 3D quality control

NMS is specialized in automated measuring solution for 3D inspection. We use robots and scanner to control large part in automotive and aeronautic market. Today we are looking for vision solution to detect defects : sensors and software for image processing. The aim is to add this function (defects detection) on our existing robotic solution.

**EIT MANUFACTURING FLAGSHIP:** Digital and collaborative solutions for innovative manufacturing ecosystem**TECHNOLOGY READINESS LEVEL:** TRL9

COMPANY NAME: Continental

COMPANY WEBSITE: [Continental france - homepage - france du groupe continental](https://www.continental.fr)

TITLE OF THE CHALLENGE: Unpacking of electrical components in bulk to feed the production line

The production line needs to be fed with different electrical components (in plastic or metal) to run. The takt time is between **10 to 20s**. The electrical components are delivered by the suppliers in bulk in boxes. Currently the unpacking and sorting of the components is done manually by operators which is not satisfactory due to the repetition and the arduousness of the task.

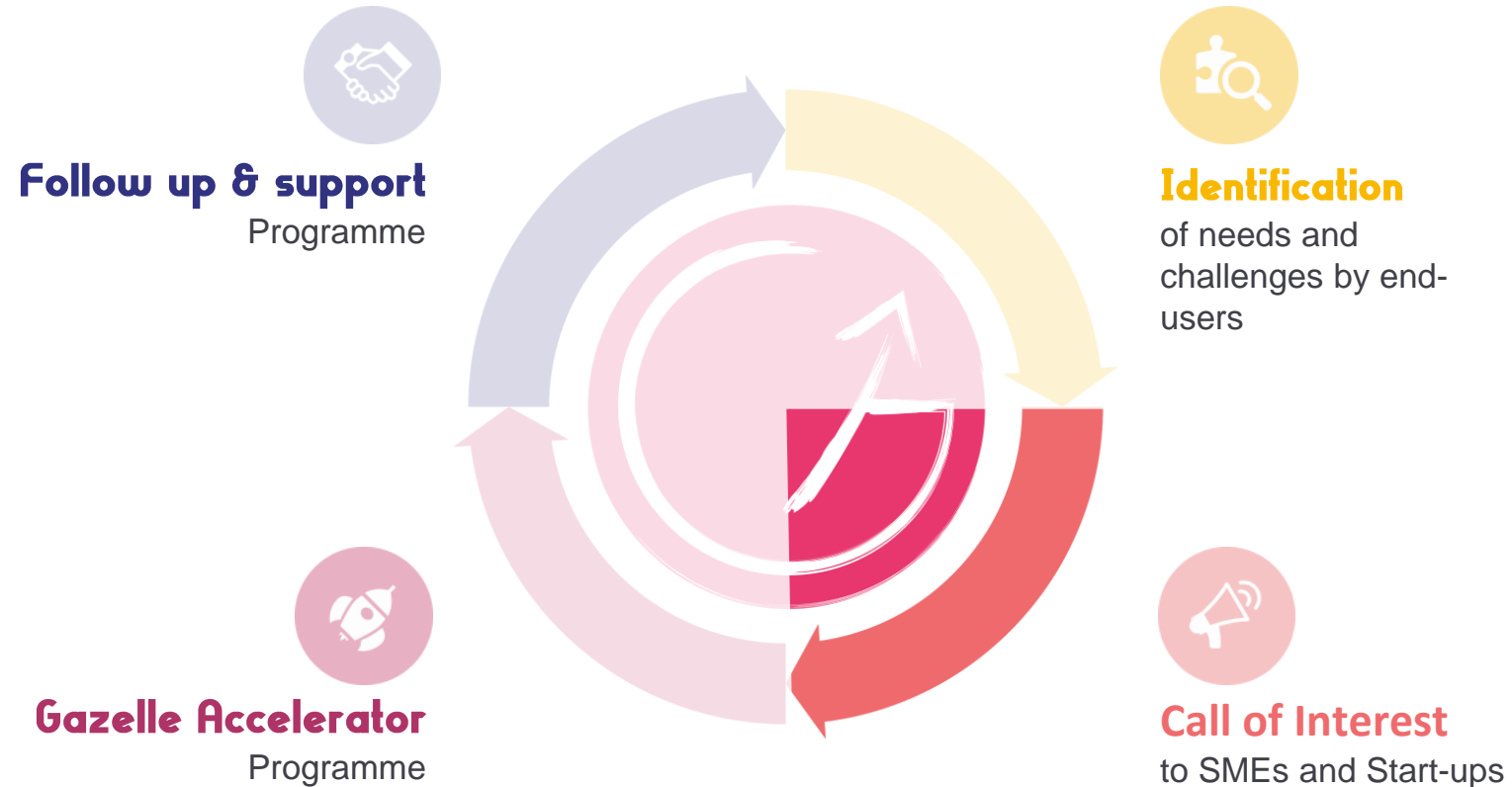
Continental is looking for a robotic solution, combined with vision systems in order to unpack the cardboard, take the components inside and located them in an exact location at the start of the production line. The solution should be easily reconfigurable if the components are modified. Some solutions were tested but not satisfactory in terms of picking the components in depth in the boxes and takt time.

EIT MANUFACTURING FLAGSHIP: Flexible production systems for competitive manufacturing

TECHNOLOGY READINESS LEVEL: TRL8 or TRL9 – we are looking for industrial solutions which works with our takt time – possibility to do a small POC if necessary

# Gazelle Accelerator

A yearly Programme



Selection criteria

# Have you the right profile for Gazelle Accelerator?

---

- ✓ Companies (start-ups, scale-ups and SMEs) with their headquarters in **the European Union**
- ✓ Developing product/technology/service within **industry 4.0**
- ✓ With **innovative** solutions in their domain
- ✓ With a strong **go-to-market plan** and **growth potential**
- ✓ Their product/technology/service has **TRL level > 6**

Expected contribution from the applicants

## Financial contribution

---

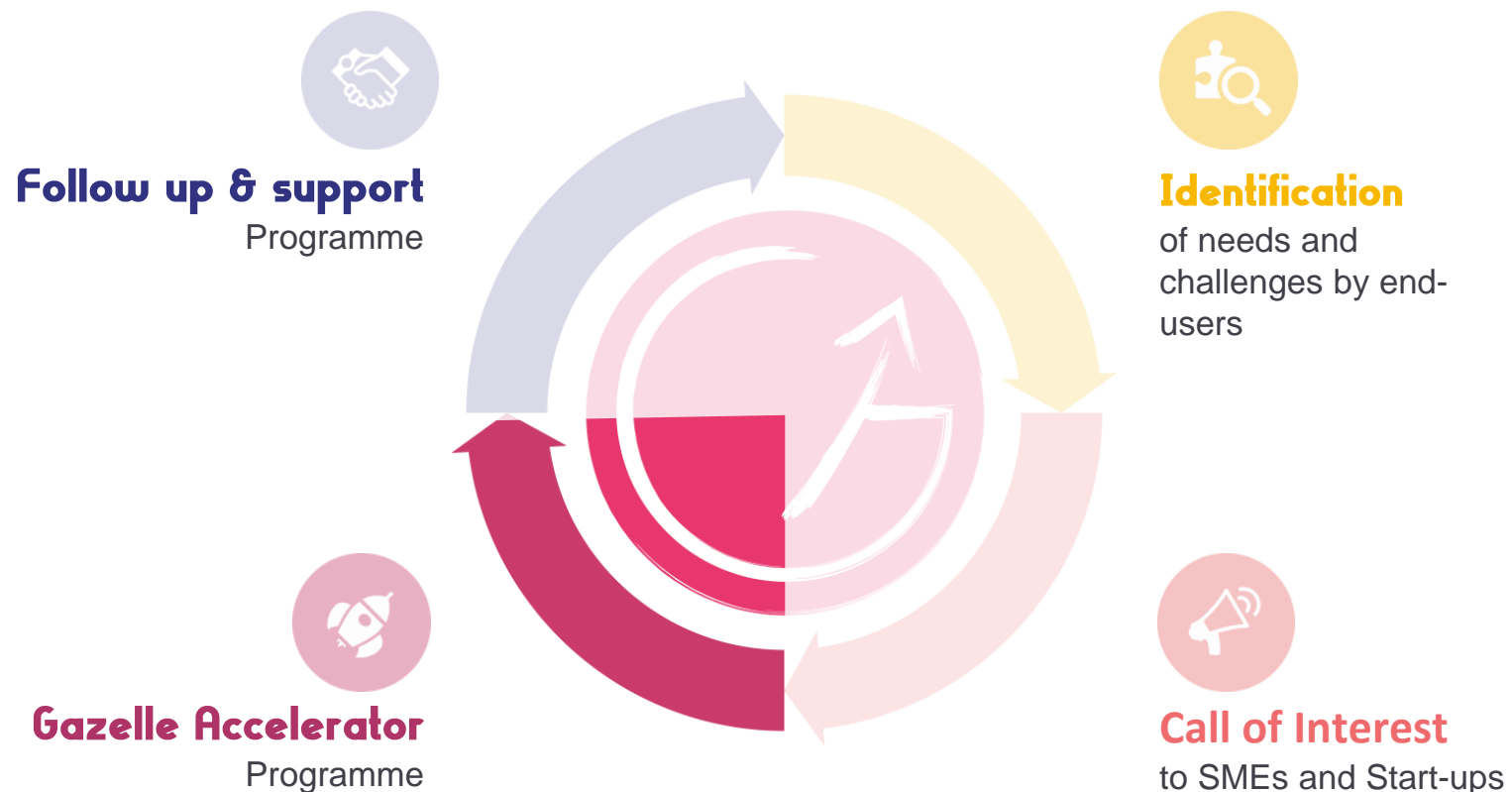
### Success fees\*

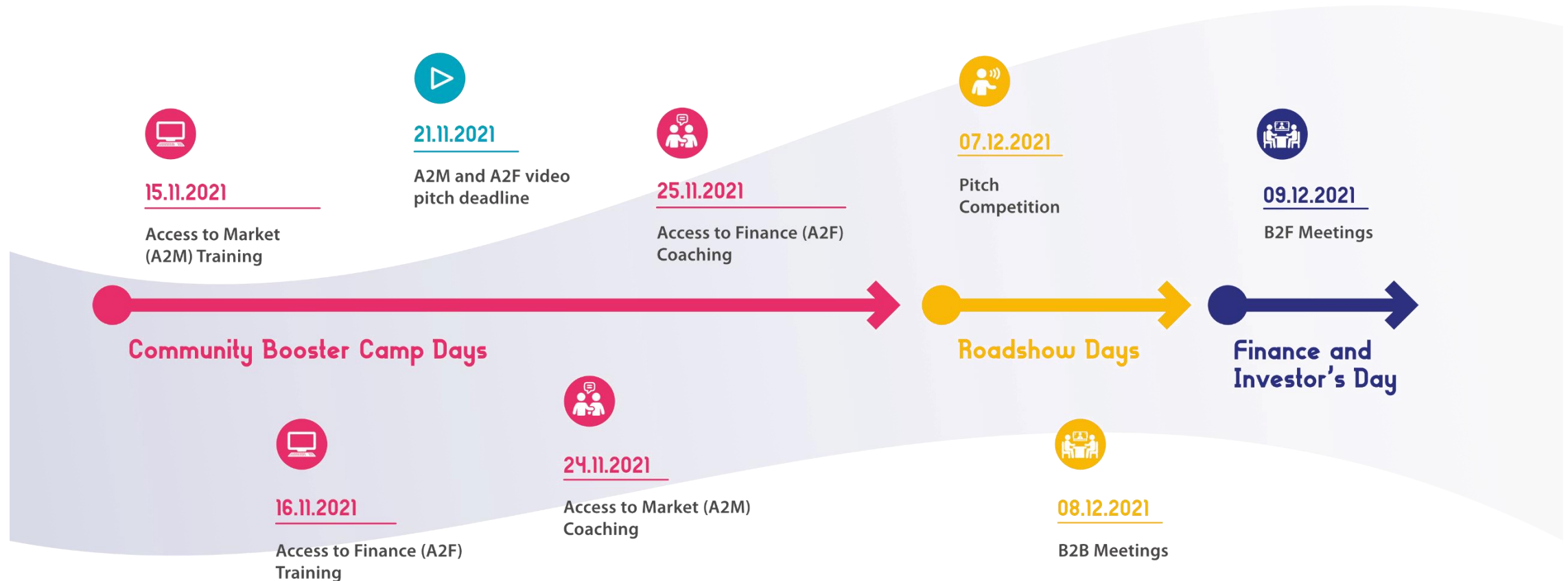
- Access to finance success fee:  
It refers to a fix success fee depending of the investment attracted
  - A success fee of 5 000 € is applied for investment up to 500 000 €
  - A success fee of 7 500 € is applied for investment more than 500 000 €
- Access to Market success fee:  
It refers to a percentage of the deal depending on the type of exploitation contract, Proof of concept and / or implementation contract
  - A success fee of 5% is applied per Proof of Concept
  - A success fee of 5% is applied per implementation contract

\* Aimed to contribute to the EIT Manufacturing financial sustainability

# Gazelle Accelerator

A yearly Programme

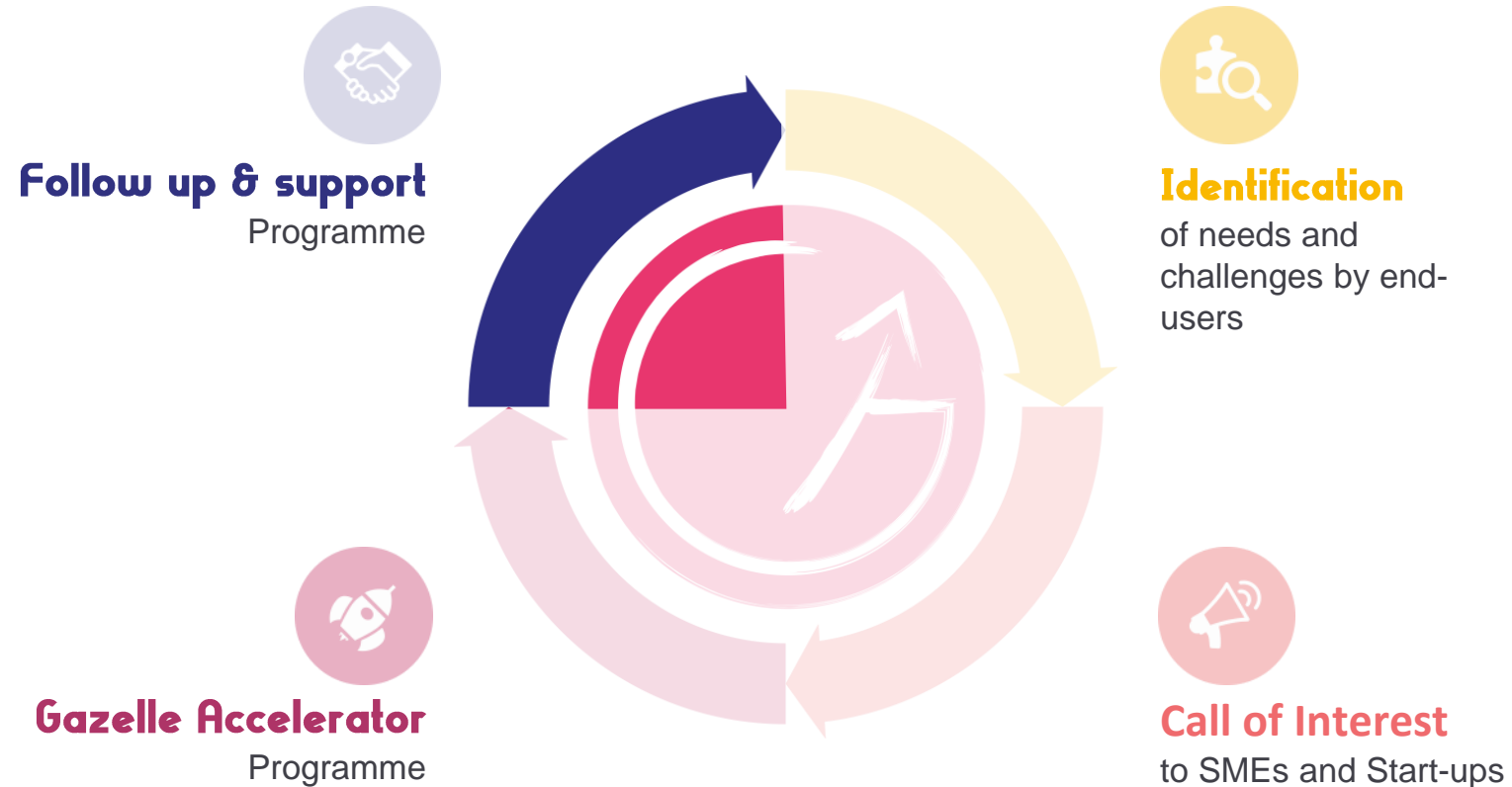






# Gazelle Accelerator

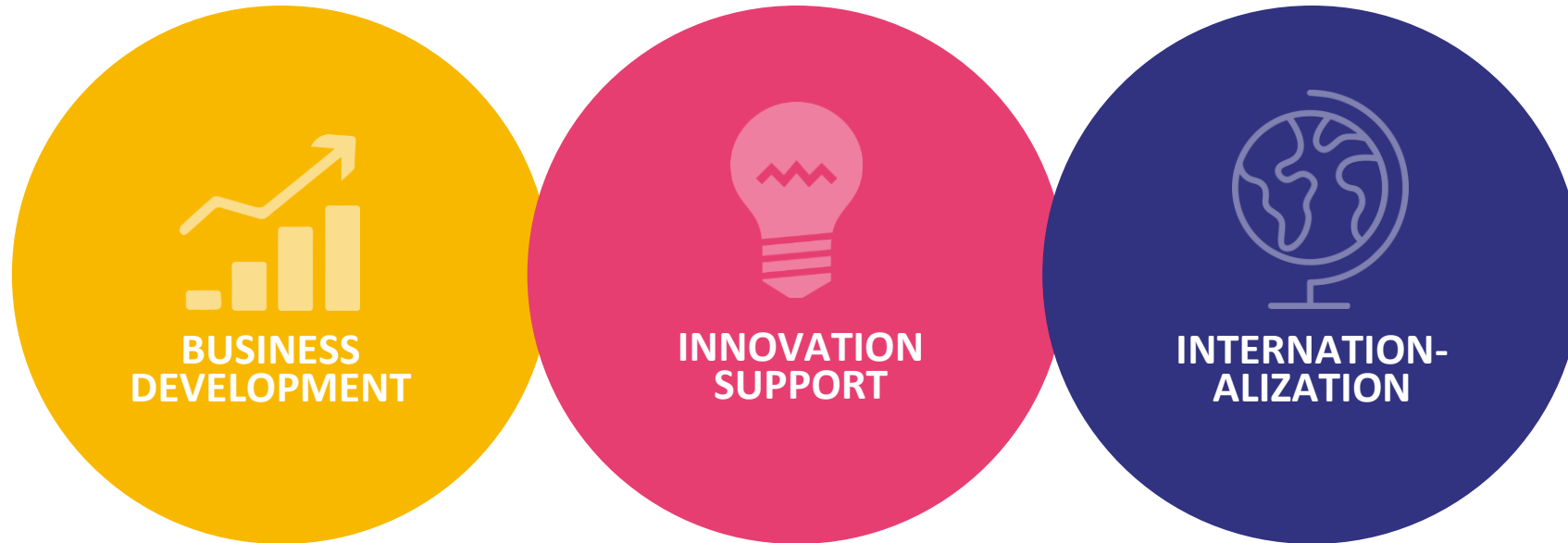
A yearly Programme



# Follow-up and support programme

Tailored for each SME and start-up

---



# Call for Action

Call for start-ups and SMEs to join our Programme



APPLY FOR THE 4TH GAZELLE ACCELERATOR PROGRAMME !

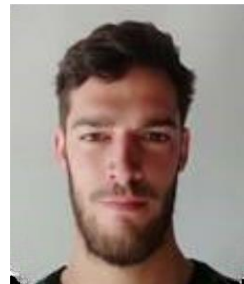
And start your acceleration journey !

They have already trusted us !



## Project lead

Aerospace Valley



### Florian RUF

Project Manager of Gazelle Accelerator  
from Aerospace Valley

Phone: +33 6 64 99 64 34

E-mail: [ruf@aerospace-valley.com](mailto:ruf@aerospace-valley.com)





# Thank you

for your attention !

## Any questions ?

